

RangeNav™

Transportable Acoustic Tracking Range



Operator's Manual

Version 2.01

June 2008

For use with Software V2.01

Desert Star Systems, LLC

3261 Imjin Rd

Marina, CA 93933

(831) 384-8000

www.desertstar.com

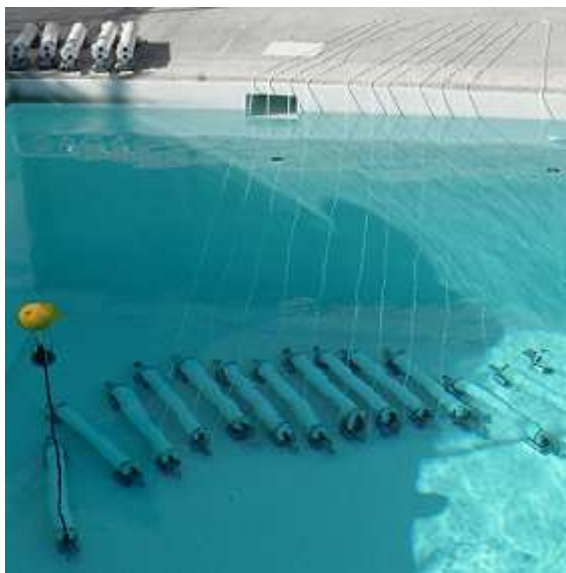
Table of Contents

1. Introduction.....	3
2. RangeNav™ Software, Firmware and Driver Installations	6
2. RangeNav™ Software, Firmware and Driver Installations	7
3. Systems Wiring and the Array Power Up / Down Procedure.....	8
4. Defining The Array Operating Frequencies and Signal Monitoring	10
5. Deploying and Recovering the RangeNav™ System	11
6. Conducting an Array Self-Survey.....	13
7. Tracking Operations.....	15
8. Replaying Tracking Records and the RangeNav™ Data Files.....	21
9. Recording Raw Acoustic Data with the RBS-101 Stations	23
9.1. Operation via the RangeNav™ Surface Station Software.....	24
9.2. Advice for the Download and Use of Raw Acoustic Data.....	25
9.3. Data File names and Format.....	25
10. Tracking Multiple Targets.....	27
11. System Maintenance.....	29

1. Introduction

RangeNav™ is a transportable acoustic tracking range. It is designed to track pinger equipped targets for applications including underwater vehicle performance evaluations and monitoring of underwater assets in naval exercises. Characteristics include:

- A compact, transportable design suitable for quick deployment and recovery at any desired test site.
- Specifically optimized for littoral waters, and capable of operating at depth ranges from 1m to 300m.
- Designed for coverage up to 20 nautical miles x 20 nautical miles.
- Automated acoustic self-survey determines relative station locations within minutes.
- Simultaneous tracking of up to eight targets in three dimensions with horizontal accuracy of approx. 1 meter and vertical accuracy of approx. 0.3 meters. Position quality indicator provides estimated accuracy of each fix.
- Standard position update rate of once per second for all targets.
- Compatible with Desert Star depth-encoded pingers and US Navy standard DPSK pingers.
- Broadband, DSP based design operating from 2 kHz to 80 kHz.
- Simple surface equipment consisting of a junction/power box and a MS Windows notebook computer or desktop.
- Client-server architecture supports tracking data viewing in remote locations via the Internet or LAN.
- Uncomplicated and rugged hardware that enables use of locally available labor and vessels of opportunity.
- A relatively low-cost design permits use in 'risky' locations where equipment loss is a possibility.



RangeNav™ Systems consist of a number of interconnected listening stations linked to a surface junction/power box and PC.

RangeNav™ systems are configured from the principal components listed in this chapter. In general, the information in this operator's manual is sufficient for most tasks. Additional detailed information about the components is available in these RangeNav™ Manuals:

RangeNav™ Technical and Software Reference Manuals

1. The DiveBase RangeNav™ Software Reference Manual describes the surface station software.
2. The TLP-100-101-102 Technical Reference Manual describes the standard pingers.
3. The TLP-103 Technical Reference Manual describes a micro pinger for small targets.
4. The RBS-100-101 Technical Reference Manual describes the listening stations.
5. The STM-100 Technical Reference Manual describes the surface station junction box.
6. The RPD275-550-1100 Technical Reference Manual describes the array data and power cable.

RBS-100 Listening Stations



At the core of a RangeNav™ system are a set of model RBS-100 broadband listening stations. The stations are linked in a daisy-chain fashion, with up to 100 stations per chain and a maximum supported chain length of 20 nautical miles if stations are spaced in 1km intervals. An anticipated expansion will allow the use of multiple chains, so that a coverage of up to 20nm x 20nm can be achieved.

These 'intelligent' listening stations receive acoustic signals from the pingers through a broadband hydrophone and transmit transducer assembly that is attached to the station via a short (1.5m) cable. Signals are processed in the station using filter and telemetry decoding parameters provided per remote command by the surface station. In-station acoustic signal processing

greatly reduces the data volume to a brief ping descriptor, which is transmitted via a RS-485 copper-based data link to the surface.

In addition to their broadband acoustic receive capability, the listening stations are also equipped with an acoustic transmitter and transducer, operating at 16kHz – 24kHz. The acoustic transmit capability is used primarily for array self-survey, providing a speedy and very accurate means to determine station locations relative to each other.

In order to determine precise depth of their location, each station is equipped with a 0.1% of full scale accuracy pressure sensor. The pressure sensor rating is 500 PSIA, supporting the station's 300m depth rating. Each station reports its depth to the survey as a part of the array self-survey process.

The listening station are powered by 50/60Hz AC power from the surface junction box, and can be configured to operate at either 880 VAC or 440 VAC nominal. The higher voltage supports maximum chain length, but the lower voltage is a safer solution for applications or in areas where human interaction with the system is common. Each station relays both power and conditions and relays data down (and up) the chain.

In addition to its main DSP processor, the listening stations include a micro-controller which is exercising supervisory function. These include a data and power bypass that is activated if the DSP chip is not responsive. The mechanism allows the remainder of a chain to keep operating even if the DSP circuitry in one station is defective.

RBS-101 Recording Stations

The model RBS-101 recording station are identical to the RBS-100 listening stations, except that a CF FLASH memory card is integrated and raw acoustic data recording firmware is provided. Due to its copper/RS-485 data interface, umbilical communication bandwidth is limited and not suitable for continuous raw acoustic data transmission by all stations in a chain. (Doing so is not normally necessary, because each station processes the acoustic data and needs to send only short ping descriptor packages).

Yet, the RBS-101 station helps when there is a need to obtain occasional samples of raw acoustic data, such as to evaluate background noise or measure the noise signature of a target. The surface station can instruct any listening station to record the raw data. The data is stored in the FLASH memory, and can be retrieved by the surface station on a bandwidth available basis. FLASH card capacity is 1 GB standard 8 GB optional. The 1 GB standard capacity is sufficient for approx. 30 minutes of raw data recording at the standard sample rate of 250 kHz.



Data and Power Cable

The RBS-100 listening station and RBS-101 recording stations are linked to each other and the surface junction box through the data and power cable. Cable sections of 250m, 500m and 1000m are available. Each section is terminated with wet-mateable (diver serviceable) underwater connectors and a 'chinese finger' strain relief system.

The cables include a cut and abrasion resistant clear polyurethane jacket that supports inspection, a Kevlar braid strength member and water swelling tape to slow cable flooding in case of a cut. The maximum working load is 500lb and the breaking strength is 1500lb. The cable is negative buoyant.

A 250m spool weighs approx. 85lb. The six-conductor cable includes an AC power pair, plus two twisted data pairs supporting two RS-485 data channels.



STM-100 Junction and Power Box

Each chain is terminated at the surface to a model STM-100 junction and power box. The principal functions of the STM-100 are power generation and handling and data relay between the underwater array and the surface station PC.

The STM-100 connects to 50/60Hz AC power and is factory configured for either 110VAC or 220VAC operation. It converts the power to either 440VAC or 880VAC before feeding it into the array.

A power monitoring operates in conjunction with reports from the listening stations, and provides continuous reports about the voltage at each station and the current flowing through each conductor of the power pair. The power monitoring helps determine the max. available chain length (before voltage gets too low), and detect any faults such as leakage currents, defective station electronics or short circuits. For safety purposes, the STM-100 also cuts power to the array if either a sudden current spike or a ground fault (current mismatch) is detected.

The STM-100 also includes an input for a GPS time signal. In conjunction with a similar input available on the depth coded pingers, the time signal allows direct pinger-to-listening station distance measurements (as opposed to the normal distance differences obtained with unsynchronized pingers). This mode is sometimes used to improve the array GPS surveys accuracy and reliability. It yields station coordinates for each listening station individually, and completely independent of the other listening stations.



Surface Station PC and Software

The surface station PC connects to the STM-100 junction box via a RS-485 converter that plugs into a USB port on the PC. The converter and cable are supplied as standard accessories. A powerful Windows XP notebook PC is sufficient to service a maximum length chain, because the computing intensive raw acoustic data processing has already been performed by each listening station.

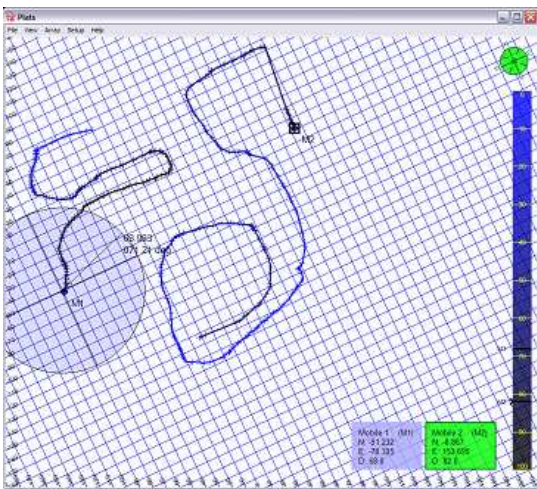
The PC runs the RangeNav™ software, which computes and displays target tracks, resolves array self and GPS surveys and monitors the array health status.

Due to the small size and minimal power demands of the surface station, it is quite practical to operate a RangeNav™ system from a trailer or control van using line power or a generator.

TLP-100, TLP-101, TLP-102 and TLP-103 Depth Encoded Pingers

The RangeNav™ system is designed to track pinger equipped targets. These may be standard U.S. Navy DPSK pingers, or Desert Star's depth encoded pingers. Four pinger types are currently available:

1. The **TLP-100** low-frequency pinger operates at 8-16 kHz with a transmit power of 192 dB. It includes a precision 500 PSIA depth sensor, with an accuracy of 0.5 PSI. The TLP-100 yields the greatest range and therefore supports maximum station spacing. It is also the largest design. The TLP-100 is intended primarily for tracking submarines and large UUV.
2. The **TLP-101** is similar to the TLP-100, except that the frequency range is 16-24 kHz. This mid-frequency pinger is suitable for smaller vehicles as well as divers.
3. The **TLP-102** high-frequency pinger operates at 34kHz-42kHz, and is otherwise identical to the TLP-101 including a housing of the same size. The higher frequency produces somewhat less range and thus requires denser station spacing, probably not to exceed 500m. In multi-target tracking, using this pinger along with models for the two other frequency bands provides better ping frequency separation for more robust tracking.
4. The **TLP-103** micro-pinger also operates at 34kHz-42kHz, but comes in a much smaller package. It is suitable for micro UUV, divers and other small targets. Transmit power is limited to 177 dB, and as such listening station spacing should not exceed 250m. Its 500 PSIA depth sensor has an accuracy of 5 PSI.



2. RangeNav™ Software, Firmware and Driver Installations

SEALEVEL P/N 2104 RS485-USB Converter

1. This converter is used for communication between the surface station PC and the STM-100 junction box. Prior to first use, open the black housing of the converter using a small flat-head screwdriver for gently prying. Set switches 1-7 to the ON position and switch 8 to the OFF position. This setting configures the converter for two-wire RS-485 operation.
2. Now connect the converter to a USB port of the surface station PC. The PC will detect the new device and start the hardware installation wizard. Insert the SEALEVEL CD ROM and follow the instructions of the wizard.

RangeNav™ Surface Station Software Installation

1. Insert the RangeNav™ CD ROM
2. The CD should auto-launch. Follow the wizard instructions. If the CD does not auto launch, then use Windows Explorer to click on the **Setup** icon.
3. Start the RangeNav™ software.
4. Configure the software for communication with the STM-100 junction box by selecting the COM port that the SEALEVEL converter has been assigned to. Do this by selecting **Setup->Data Connections** from the main menu. The figure below shows proper configuration through a SEALEVEL device on COM4. The standard baud rate is 115200 baud.

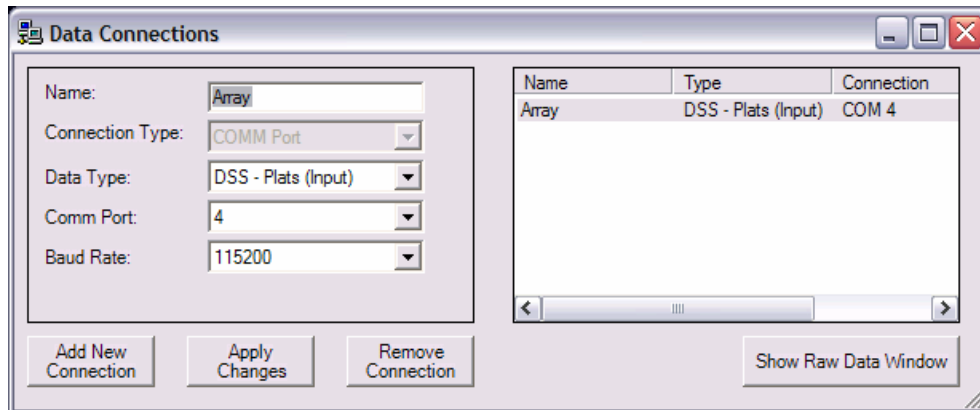


Figure 1: Configuring the connection between the PC and the STM-100 Junction Box

Updating the RangeNav™ Array Firmware

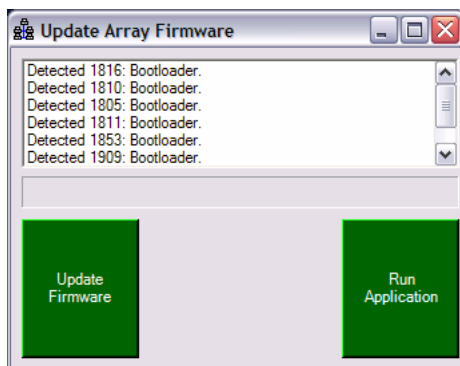


Figure 2:
Firmware Update

The firmware on the RBS-100 listening stations, RBS-101 recording stations and STM-100 junction box is updated on occasion. New firmware can be downloaded to the entire array while deployed, or it can be downloaded to individual stations or a set of stations at the maintenance depot. Downloading new firmware to a deployed array is an acceptable practice to test newly developed capabilities. However, you should always have a production approved version of the firmware at hand, to revert to in case a bug should become apparent.

To update firmware, connect the array as you would for operation (PC to STM-100 to a number of RBS-100 or RBS-101 stations). Then, power up the array. (If you use automatic power-up, make sure the **Start Application on Power Up** check box is not selected). Next, select **Setup->Update Array Firmware**. Click the **Update Firmware** button and select the new firmware file in the browser. The firmware has a .VC extension. The window will show progress information. Once download is completed,

click the **Run Application** button to launch the updated firmware.

3. Systems Wiring and the Array Power Up / Down Procedure

System Wiring

Wire a RangeNav™ system for operation as follows:

1. Link the surface station PC to the STM-100. A USB port on the PC connects to the PC port of the STM-100 using the supplied SEALEVEL RS-485 converter and STM-100 data cable.
2. Connect the STM-100 to 50/60 Hz AC power (110VAC or 220VAC only as indicated on the STM-100 panel) using the supplied marine power cord.
3. Connect a hydrophone / transmit transducer assembly to each RS-100 listening or RBS-101 recording station. The transducer assembly connects via a 1.5m 4-conductor cable.
4. Use an umbilical cable section (275m, 550m or 1100m spool depending on desired listening station spacing) to link the STM-100 junction box to the first RBS-100 listening station or RBS-101 recording station. The cable section links the ARRAY connector of the STM-100 to the 'upstream' connector of the listening/recording station. (The connector polarity arrangement assures correct connection).
5. Connect the 'downstream' umbilical connector of the first listening station to the 'upstream' connector of the second listening station using another umbilical cable section. Continue in this fashion to the end of the chain.
6. Terminate the downstream connector of the last listening station or cable section with a dummy plug to prevent a water short circuit of live wires.
7. Optionally, connect the one-second time signal output (TTL signal) of a GPS receiver to the GPS input on the STM-100. The GPS time signal can be used to synchronize the listening station array to GPS triggered pingers for improved absolute (earth coordinate) array surveys.

System Power-Up Procedure

The RangeNav™ system uses power relaying. 440VAC or 880VAC power is injected by the STM-100 junction box into the 'upstream' end of the array. The power reaches the first listening station, which relays the power on command to the second listening station and so on until the entire array is energized. Power relaying allows operation of an only partially energized array, such as to operate an array upstream of a cable cut (short circuit avoidance), to allow service at a point of failure, or when only a partial array is needed for a tracking task.

The RangeNav™ system also monitors the current flowing through each of the two power conductors, and the voltage seen across the conductors in real-time. The electrical current data is useful as an early warning sign of impending failure such as due to a bad connector, cable cut or deteriorating transformer. It is also used by the RangeNav™ safety system to automatically cut power if a ground fault (current imbalance) or a current spike has been detected. The safety system minimizes the risk of both electrocution and equipment damage.

The power up sequence for the array can be executed automatically, or listening stations can be powered up or down individually using the manual power procedure.

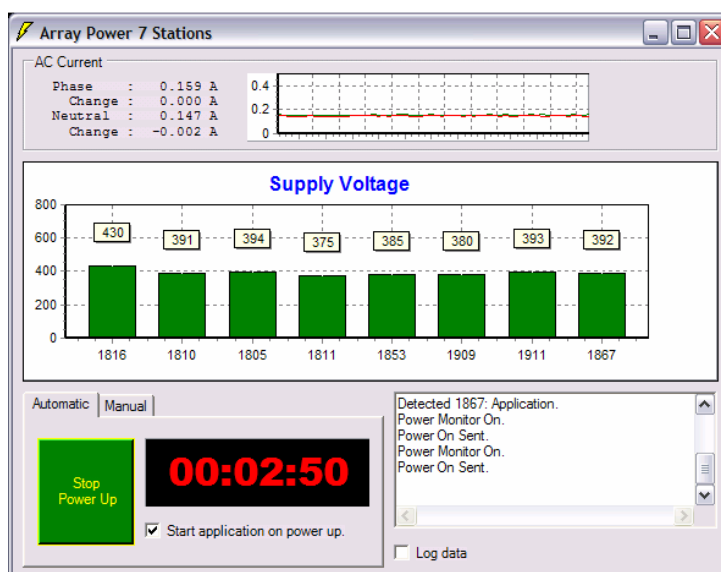


Figure 3: Array Power Window, Automatic Tab

Automatic Power-Up

Use this procedure to execute a standard power-up of the entire array.

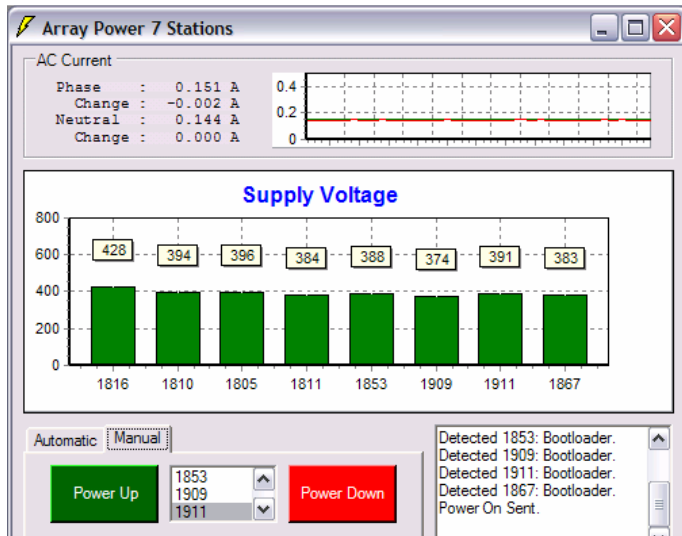
1. Select **Array->Power**
2. Select the **Automatic** tab.
3. Leave the **Start application on power up** tab checked if you wish to initiate tracking immediately following the power-up. Un-check the box if you are powering up the array in order to update firmware or perform other maintenance functions.
4. Hit the **Start Power Up** button.

Automatic power-up now starts, one station at a time. As each station is powered up and communicates, its serial number appears and a bar indicates the AC voltage seen by that station. You will also see the AC current rise with each energized station. Familiarize yourself with the typical 'look' of the voltage curve and the incremental current increase. This will help you

spot problems down the road. Each station power-up and initialization typically takes 10-20 seconds. If the surface station does not see communication from another listening station within 30 seconds of energizing the next cable section, it assumes the entire array is powered up. The array power-up completion pop-up window then appears. You are now ready for tracking operations.

Manual Power-Up

Use this procedure to manually power-up (or down) one station at a time. Manual power-up provides more operator control and is available for various diagnostic and maintenance purposes.



1. Select **Array->Power**
2. Select the **Manual** tab
3. To power up the next station, hit the **Power-Up** button.
4. To send a power up or down command to a specific station (i.e. power up/down the next station downstream from that station), select its serial number in the list and hit the **Power Up** or the **Power Down** button.
5. To verify umbilical communication with all stations and re-establish their serial numbers, hit the **Enumerate** button. This is useful to determine if a station's main processor may have failed and has been bypassed by the station's supervisory processor. In that case, its serial number will no longer appear but stations further downstream may still be available.
6. To start or stop power monitoring, hit the **Start Power Monitor / Stop Power Monitor** button. In

general, it is recommend to keep power monitoring active at all times. An exception might be to conserve umbilical communication bandwidth for tracking functions in a large array.

7. To start the tracking application following manual power-up, click the **Start Application** button. Once started, you cannot exit an application. Instead, it will be necessary to power-down and the power-up the array if you wish to perform functions such as firmware update.
8. Click the **Log data** check-mark if you wish to record all power data. Use this capability to create a power log for diagnostic or Desert Star technical support purposes.

Array Power-Off

To quickly power-down the entire array, flip the STM-100 power switch to the **OFF** position. You can also go to the manual power screen, select the first station (this is actually the STM-100) and send it a **Power Down** command. Use a similar procedure if you wish to power-down a portion of the array.

Detecting and Dealing with Power Faults and Array Size Limitations

RangeNav™ operators should make it a habit to monitor the power characteristics of the array. This will allow you to notice early warning signs of faults such as leakage currents due to a bad cable or connector, or a bad listening station before such a problem causes an automatic array shut-down. Further, the 'voltage curve' formed by the sequence of listening stations indicates when you are approaching the maximum available length of the array due to excessive voltage loss. The following list provides some advice on these matters.

- The low-voltage limit for arrays configured for 440VAC operation is 240VAC. Array voltage will drop in each cable section due to cable losses. When the last station sees 240VAC, you have reached the limits of operation and the array cannot be extended any further. The low-voltage limit for arrays configured for 880VAC operation is 480VAC.
- Each additional listening station will increase current in the array by about 15mA – 30mA. If you see an incremental current above 30mA, the downstream end listening station may be defective. If the incremental current is below 15mA, then the station is probably not seeing power such as because you are at the end of the array (no further stations) or because there is a broken power conductor.
- A cable by itself without a further station will in fact consume power. That is due to the capacitive and inductive characteristics of the cable in conjunction with its ohmic resistance. If you daisy-chain two or more cables without a station, you will see a higher incremental current for that extended cable section.

- The incremental current curve may not be completely even, because energy is stored in the cable system's capacitive and inductive characteristics and some currents may circulate locally.
- There are signs that a given listening station may in fact see a slightly higher voltage than its upstream neighbor. This may be due to localized energy storage in the cable.

4. Defining The Array Operating Frequencies and Signal Monitoring

RangeNav™ is a programmable broadband system, with frequency coverage from 600Hz to 80 kHz. Prior to operation, you must define the operating frequency channels, both for the array and the pingers. The single-target version of RangeNav uses three channels:

- Channel 1 is the self-survey frequency. This should always be 16 kHz.
- Channel 2 is the synchronization frequency of the depth coded pinger. It is pinger model specific.
- Channel 3 is the depth telemetry ping of the depth coded pinger. The frequency is pinger model specific.

Operating frequencies and filter characteristics are defined by FIR filter files, which have a .fir extension. Table 1 lists currently available filter files.

Filter Name	Center Frequency	Bandwidth (@ -3dB)	# of coefficients	Use for
16000Hz.fir	16 kHz	800Hz	398	Ch. 1 self survey
8492Hz.fir	8.4925 kHz	800Hz	398	Ch. 2 for TLP-100
10498Hz.fir	10.498 kHz	800Hz	398	Ch. 3 for TLP-100
16528Hz.fir	16.5289 kHz	800Hz	398	Ch. 2 for TLP-101
18518Hz.fir	18.5185 kHz	800Hz	398	Ch. 3 for TLP-101
34482Hz.fir	34.4828 kHz	800Hz	398	Ch. 2 for TLP-102/103
36363Hz.fir	36.3636 kHz	800Hz	398	Ch. 3 for TLP-102/103

Notes:

1. The filter bandwidth defines the frequency range passed by the filter. A larger bandwidth accepts a higher maximum target speed (allowance for Doppler effect) and yields better ping time detection accuracy. It also passes more noise and therefore reduces the maximum detection range.
2. In order to achieve desired filter characteristics, a certain number of filter coefficients is needed. In general, sharper filters (less bandwidth and/or better stopband rejection) also require more coefficients. However, a filter with more coefficients will increase the time-uncertainty of ping detection, resulting in reduced tracking accuracy. The processing power requirement also relates to the number of coefficients.

Table 1: FIR Filter Files

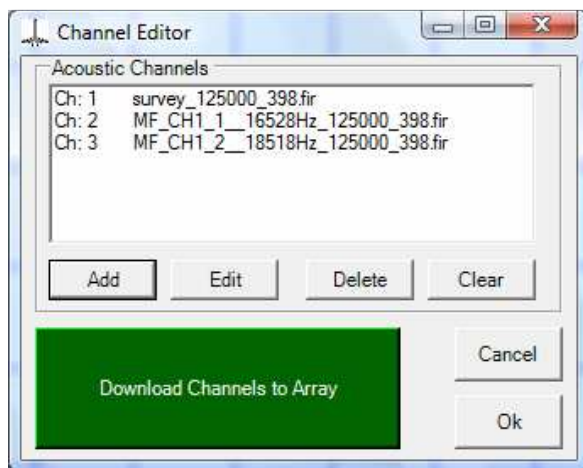


Figure 5: Defining Operating Channels

Programming the Channel Frequencies of the Array

1. Select **Array->Channel** Editor
2. To add a new channel (you must have three channels defined for single-target tracking), hit the **Add** button
3. Select the .fir filter file for the first/next channel in the browser, using table 1 for guidance. The next free channel number will be automatically assigned.
4. To change a channel definition, select the channel in the list and hit the **Edit** button.
5. To delete a channel, select the channel in the list and hit the **Delete** button. The remaining channel numbers will be re-assigned.
6. Once your channel definition list is complete, hit the **Download Channels to Array** button to download all channels to all energized listening stations.

Programming the Channel Frequencies of the Pinger

1. Connect the pinger to the COM port of the MCU-5 charging/configuration station.
2. Connect the USB port of the MCU-5 station to a USB port of your PC using a standard USB master/slave cable.
3. Start the HyperTerm utility on the PC, select the assigned COM port and select 4800 baud
4. Follow the prompts or pick up the technical reference manual to see how to configure the pinger.

5. Deploying and Recovering the RangeNav™ System

All RangeNav deployment techniques require assembling the chain of cable sections and listening stations. Depending on the deployment technique, this may be done prior to boat departure or while the deployment is in progress. The assembly process is as follows:

1. Connect each listening station to its stainless steel strong-back and lead weights, making sure it is well centered. Use two stainless-steel hose clamps to secure the station. Loop the hose clamp around the station and strong back, and through the two slots of the 5 lb lead weight. Place a 1/8" thick neoprene rubber pad between the station and the strong back at each hose clamp. **Important: The rubber pad is needed both to avoid long-term bending of the Delrin station housing and as part of the shock absorption system. Do not omit it.** Tighten the hose clamps only moderately (approx. 12 inch-pound). The station should be snug, but still be able to slip somewhat if dropped on deck onto the end of the strong back. This is part of the shock absorption system.
2. Connect the hydrophone/transducer assembly to each station using the supplied cable. Make sure to secure the locking sleeve on both ends of the cable all the way to assure a positive connection. **IMPORTANT: Secure the cable ends to the strong back using cable ties. This is necessary to prevent repeated flexing at the connector, which has been shown to cause long-term failure of the data conductors due to stress.**
3. Connect the supplied or an alternate flotation device to the transducer assembly. The supplied float is 6" diameter, provides about 3.8 lb of flotation and has a maximum working depth of 400m. Use larger floats if there are substantial water currents in the area. Keep in mind that more weight may be needed as well.

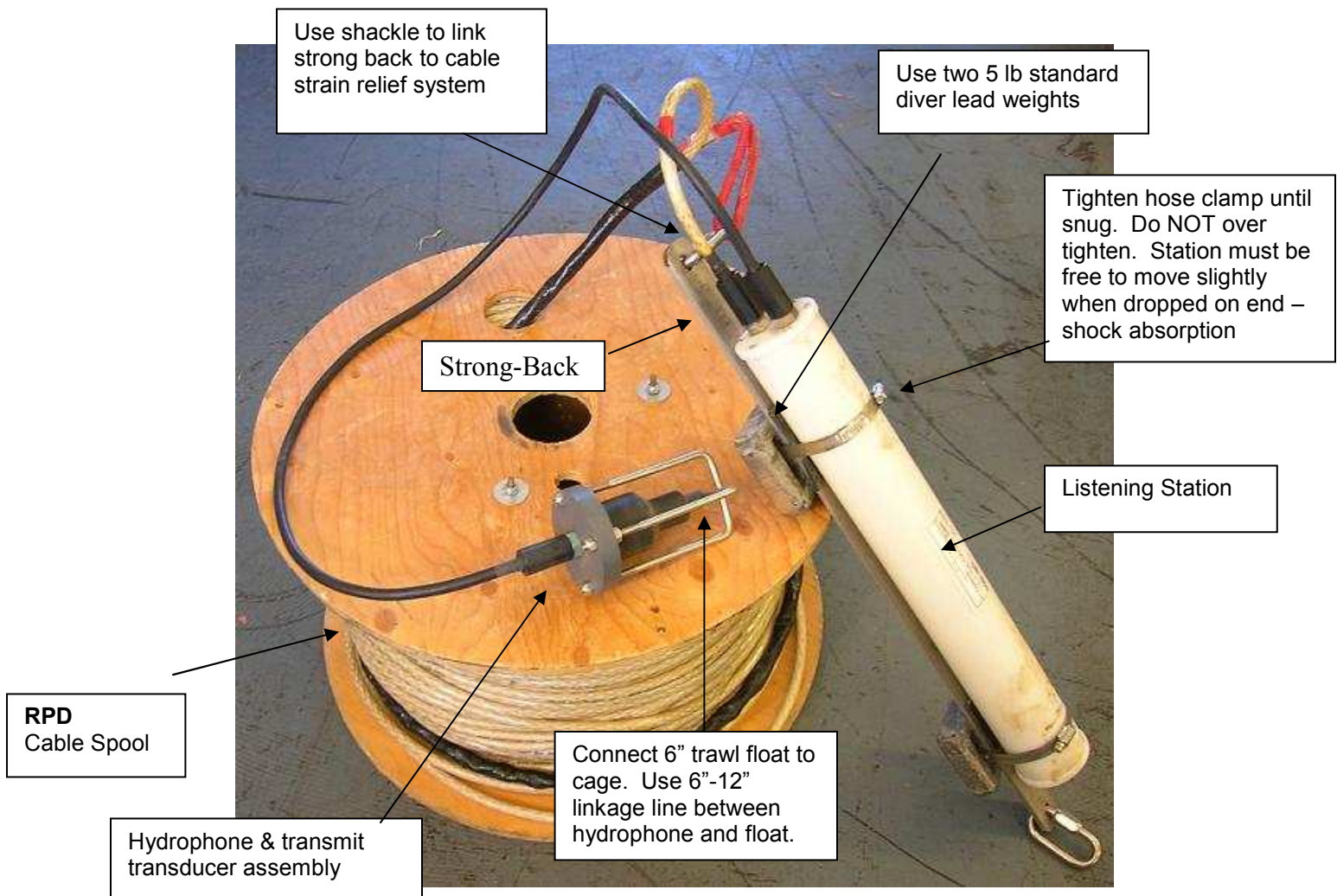


Figure 6A: Rigging the Listening Stations for Deployment



Figure 6B: Listening Station Rigged with Strong-Back & Weights

The RangeNav™ array consists principally of listening stations interconnected by cable sections. There are several deployment techniques, each with its own set of advantages and disadvantages. Recovery is generally the reverse of the deployment process.

Array assembly while deploying

Cable sections and listening stations may be stored unassembled on deck and/or in the hold. Each cable section is on a spool. For deployment, a cable section is mounted on an un-powered rack and cable is spooled out over the stern of the boat. As a spool is almost paid out, the boat slows and stops. The crew connects the next listening station and mounts the next spool. The process continues to the end of the array. To aid recovery, the empty spools are mounted on a winch.

This method requires least cable handling equipment and can therefore be done from very small boats. It has excellent electrical safety, because the crew is not handling energized cables. However, the approach is very labor intensive and it may be difficult to keep the boat steady at the ends of sections as listening stations must be connected and spools swapped out. There is also no array monitoring during deployment, and thus faults will not be uncovered until deployment is complete.

Deploying multiple pre-assembled sections from a figure-8 rack

A number of cable sections and listening stations are interconnected on shore and the cable is figure-8 mounted across two posts. The upstream end of the array is connected to the STM-100 and the entire array is energized and tested prior to deployment. During deployment, the array remains energized for continuous monitoring. The cable is deployed over the stern of the boat, and listening stations are lowered into the water as the end of each section is reached. If the rack cannot hold all sections, then the downstream end of the last cable section is terminated with a dummy plug, equipped with a flotation device and left floating in the water. A new set of sections is assembled, loaded and tested. It is connected to the array, and the process continues.

This technique supports array testing prior to deployment and monitoring during deployment. Problems are therefore quickly noted and corrected. Cable handling equipment requirements are minimal, and support use of a small boat. There is no need for the boat to stop at the end of each cable section, allowing for a more precise deployment. However, the figure- process is labor intensive and care must be exercised because the crew is handling energized equipment.

Mounting multiple sections on a large, powered winch

A number of cable sections and listening stations are pre-assembled and mounted on a large winch. The winch is equipped with holders for the listening stations. The winch is also equipped with a slip ring, so that the array can be energized and monitored. The cable and listening stations are deployed over the stern of the boat, and the winch power is used during recovery.

This process requires least labor during deployment and recovery. It supports array testing prior to deployment, and monitoring during recovery. However, it also requires a large winch and a larger boat to handle the equipment. Care must be exercised because the crew is handling energized equipment.

6. Conducting an Array Self-Survey

The acoustic self-survey measures the distance of the listening stations relative to each other. This information in turn is used to compute the coordinates of the stations, expressed as meters 'north' (northing) and meters 'east' (easting) of a point of origin. You will need to pick three 'anchor stations' as a starting point for the system's listening station position computations. You do not need to know the exact location of those three stations, but they should be located in a triangle configuration as opposed to a line and must be within range of each other. This will give the best results.

Anchor station #1 will become the origin of the coordinate system (N=0;E=0). The line between anchor station #1 and anchor station #2 forms the easting axis, and therefore the location of anchor station #2 will always be a Northing of zero and an Easting equivalent to that station's distance from anchor station #1.

Follow this procedure (see screen dump below):

1. Select the **Acquire Data** tab in the array survey window.
2. Enter a reasonable **Cycle Count** such as 5 or 10 tries. A greater number of cycles (distance measurement attempts per station pair) results in better data quality due to averaging, but also takes more time: one second per cycle per station.
3. Enter a sonar **Transducer Depth Offset**. RangeNav measures all depths relative to a vacuum reference (0 PSIA). This allows the system to compensate for changing atmospheric pressures be it due to weather systems or because you are operating in a high altitude lake. The depth offset also allows you to compensate for the length of the listening station sonar transducer cable (normally 1.2m) In order to obtain the correct depth of the sonar transducer, enter the atmospheric pressure expressed in meters of sea water PLUS the length of the sonar transducer cable. For oceanic work not during a hurricane or extreme low pressure system, the atmospheric pressure will be around 10m, resulting in an entry of about 11.2m (10m + 1.2m).
4. Click the **Depth Survey** button to obtain the listening station depth from their sensors.
5. Clicking the button **Entire Array** starts the acoustic self survey. Survey progress, including the current cycle count is reported in the white status window in the lower right. The range numbers in the matrix fill in as each range is obtained, and the **Valid** entry for a station turns green once sufficient survey data for that station is available. You can stop the survey at any time by button press, or select a station row and then press **Single Station** if you wish to obtain self survey data for that specific station.
6. When the acoustic self survey is complete (and all or most station's **Valid** field has turned green), proceed to the **Calculate Positions** tab. Select three anchor stations (see explanation in the introduction above), and then click **Calculate Positions**. The software will now compute the relative position of all the stations, and display them as Northing and Easting coordinates. The residual error for the overall survey is displayed in the status window, and the error for the position of each station in the **Survey Data** display row of that station. The residual error is roughly equivalent to the position uncertainty of a station (or the average for all stations). A smaller number means a better result. You can change the anchor station selection and click **Calculate Positions** again to see if a better / more certain result might be obtained.

The below table explains how to explain the screen shot.

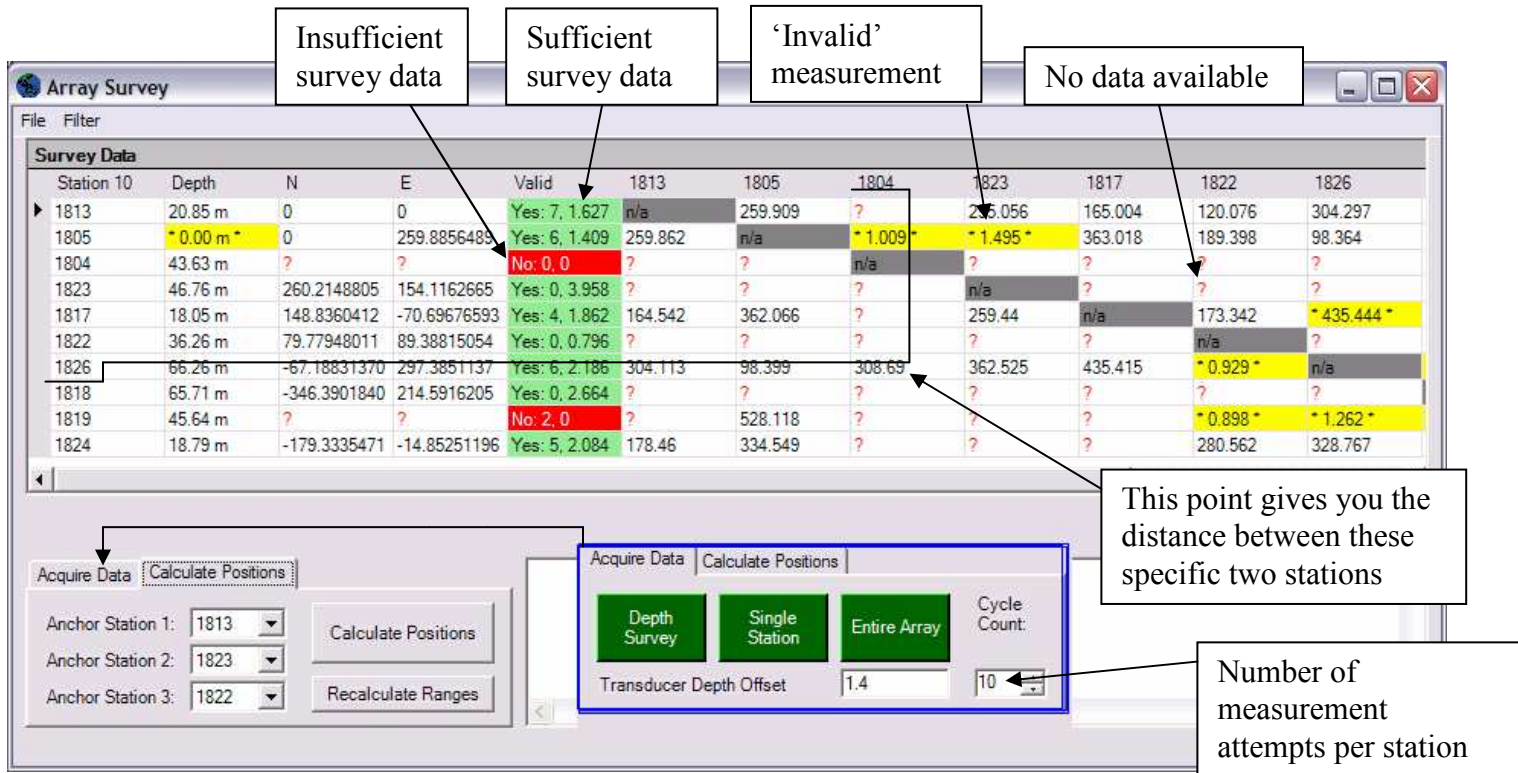


Figure 7: Array Self-Survey Screen

Survey Display Data Field	Interpretation
Station # (example Station 10)	The number of stations in the array is displayed in the upper left corner
Depth	The depth of the station, as measured by its pressure sensor
N	The Northing location of the station
E	The Easting location of the station
Valid	Yes/No— Sufficient survey data to calculate the station position is available 1 st Number—Number of other listening stations that heard the ping from this stn 2 nd Number—Residual position error (position uncertainty) for that station
Explanation of Colored Areas	Red Question Mark—Means no data Yellow Block— Data available, but considered unreliable and not used Green Block—A valid position for this station is available Red Block—Sufficient data for a position computation is not available
Calculate Positions tab	Use to calculate station positions following a acoustic self survey
Acquire Data tab	Depth Survey—Press to obtain the depth of all listening stations Single Station—Acoustic self survey for that station only Entire Array—Acoustic self survey for the entire array Transducer Depth Offset—Compensation for atmospheric pressure and sonar transducer cable length Cycle count—Desired number of range survey cycles

Figure 8: Self Survey Screen Data & Controls

7. Tracking Operations

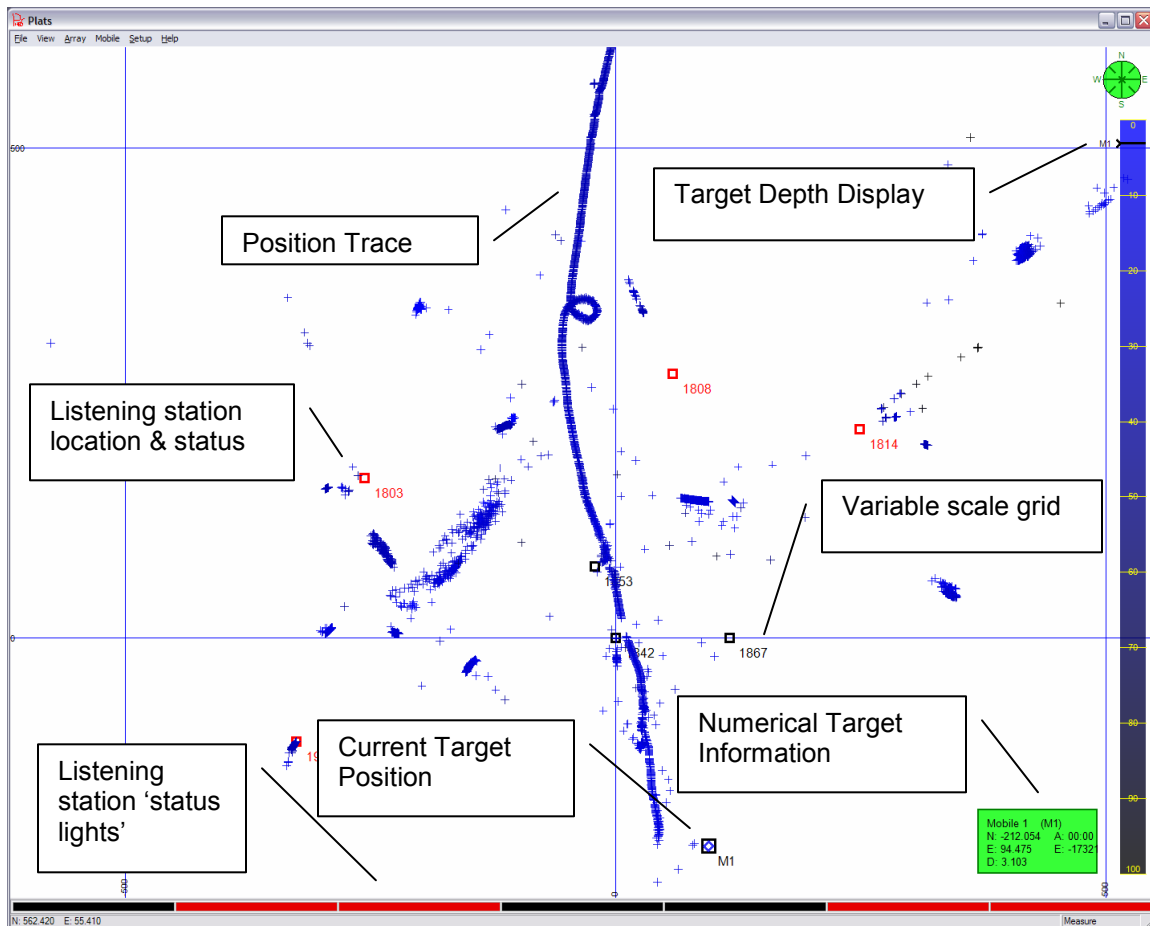


Figure 9: Tracking Display

Tracking Display Information & Control Summary

1. The **Current Target Position** is a small rectangle with the target ID code. The single-target version of RangeNav uses the ID code **M1** (mobile station #1).
2. The **Position Trace** provides a history of target positions. Each position fix is one small cross. Many individual fixes in random locations, such as on the map above, indicate that the position filter settings are not stringent enough and should be changed by selecting **Mobile -> Position Estimation Filter -> Settings**. If the screen gets too cluttered, select **Mobile -> Clear Track**.
3. The **Variable Grid Scale** should be set to provide convenient scaling, such as for example 10m or 100m per grid line. Select **View -> Settings**. The view menu is also used to select the tracking display **Pan**, **Zoom** and **Rotate** functions. Select one of these functions, point the cursor at the screen, left click and drag. If in Zoom mode, use left click to zoom in and the '-' key to zoom out. There is also a convenient **Measure** function. Select it, point, left click and drag to obtain distance and direction between two points.
4. The **Target Depth Display** uses a slider to display the report of a depth encoded pinger.
5. **Numerical Target Information** is available in the green display in the lower right corner. Here you find the target information expressed as **N**orthing and **E**asting, the **D**epth, and the time since last position fix in minutes and seconds (**A**). The **E**rror value in the lower right relates to the estimated accuracy of a fix, with a larger number corresponding to a greater error. This number currently is in arbitrary units, but our goal is to provide an error estimation in meters in the future.
6. The **Listening Station Locations** are small squares with the listening station serial number. Color indicates the status of that station. Red means the station has not reported a signal from the pinger, and green means that this station is seeing and reporting the pinger signal. As a pinger moves through the array, you can expect to see it surrounded by a 'cloud' of green stations that track its progress. A station symbol may also

be blue. That means the station is powered up, but is still sitting in the boot loader and is NOT yet running the application. You will see this when doing a power-up sequence without commanding the stations to run the application (for example in preparation for a firmware update).

7. The **Listening Station Status Lights** provide the status of all listening stations at a glance. The lights are not labeled, but the sequence corresponds to the physical listening station chain. If there are too many stations for one line of lights, then the software displays multiple lines. Read row by row from upper left to lower right. The color encoded status information is the same as for the listening station location displays. The listening station lights use the same colors as the listening station location symbols (see above). Blue means the station is in the boot loader (powered up, but not running the boot loader), red means the station is not seeing a pinger signal, and green means the station is seeing and reporting pinger signal information. In addition, the status lights use shades of red and green. A bright red or green will appear each time a report from that listening station has been received. The color will then darken over a number of seconds until it is black. A healthy station will report once per second, so its color will stay bright with slight pulsing noticeable. If properly synchronized to each other, all stations will also report at approximately the same time. So, a well working system will display a consistent and synchronous 'heart beat' of all stations, with each station either being red or green depending on if it is in the transmission range of the pinger.

RangeNav has two principal modes. **Replay mode** is available to review tracking data and is discussed in the next chapter. **Real-Time mode** is used for tracking and array survey alike. Real-time mode is active whenever Replay mode is NOT selected, i.e. it is the default mode. When in replay mode, you can switch to real-time mode by selecting **File->Switch to Realtime Mode**. Assuming you have already powered up the listening stations, conducted an array survey and defined the channels used for ping pinger detection, you will be ready for tracking. The display will now be similar as seen above.

The following is a recommended sequence used to initiate tracking information following a successful system power-up and listening station survey. Most steps and the sequence is not mandatory, so your method may vary.

1. Conduct a noise test: **Array->Signal Envelope** Select the **Bar Chart** display. Choose all the stations by highlighting them, then chose Channel 2, and finally choose 5 Hz...hit **Start**. Watch the noise peaks on the chart, expressed in dB.
2. Now set the receiver detection thresholds of all stations to be above the noise peaks that you noticed in the first step. Do this by going to **Array->Acoustic Receiver Settings**. Here, you must also set the post ping-receipt **Blackout Period** to be somewhat less than the expected ping interval. This blackout period helps the system to discriminate against echoes. The recommendation is 100ms less than the nominal ping interval, for example 900ms for a 1 second ping interval (if you are too close to the ping interval, such as perhaps 990ms for a 1 second interval, then the system may persistently home in on one specific echo).
3. To rule out any outside noise distractions that might register, go to: **Mobile->Position Estimation Filter->Settings**. These **Range Filter** options determine the treatment of pinger signal reports from individual listening stations (i.e. raw ranges):
 - a. **Maximum Range**: The maximum accepted distance from a listening station. Use to eliminate impossible or undesirable large and probably unreliable measurements.
 - b. **Minimum Signal Strength**: Signal reports below this strength are considered unreliable and will be rejected.
 - c. **Maximum Jitter**: If two successive reports from a listening station indicate an apparent distance change more than this amount, then the report is considered unreliable and will not be used.

These **Position Filter** options determine the treatment of target positions computed from multiple pinger signal reports.

- a. **Averaging Period**: Averaging is used to reduce the impact of random range measurement variations (noise) on the position computations, and thus provide a more accurate depiction of the actual position trace. This is a running average over the specified number of seconds. The appropriate averaging period for a slow target such as a diver may be ten seconds. A rapidly moving and turning target such as a torpedo will require a shorter averaging period to reduce position lag.
 - b. **Maximum Error**: This is the maximum estimated position uncertainty that will be accepted. Position fixes with a greater uncertainty will be rejected.
4. Select the tracking file name by using **File -> New Track Record**. The **Automatic File Name** option assigns the tracking file a name consisting of the start time and date. Use the **Custom File Name** option to assign a more descriptive name. In either case, the tracking data will be a .TRK file stored in the **RangeNav/Records/Track** folder. The .TRK files are text files that contain all acquired raw tracking information in a text format. They are

used to replay a track (see discussion in next chapter), and are available to export the tracking data into other software such as Excel for analysis. See the RangeNav Software Technical Reference Manual for details.

5. Some of the data windows allow you to log the data as well as viewing it. All logs are in text format. The data logs are useful to diagnose system performance, such as for example reviewing electrical logs to monitor cable, connector and electronics health. The available logs are:
 - a. **Array ->Power Control:** Array current draw and voltage reported by each listening station.
 - b. **Array ->Signal Envelope:** Acoustic signal seen on a specific channel. Useful to monitor background noise or 'see' the pinger signal.
 - c. **Array ->Time of Arrival:** Ping time of arrival reports from all listening stations. Can be used to re-compute target positions.
6. Activate the target pinger and start tracking. Move around the display using these functions. They are also described in the box above.
 - a. CTRL-Z: Zoom, zoom a rectangle (zoom in +, zoom out -)
 - b. CTRL-M: Measure, circle from-to
 - c. CTRL-P: Pan, hand. Center on mobile by clicking on mobile box. Center on listening station by clicking on its status field.
 - d. CTRL-R: Rotate, pie chart from center

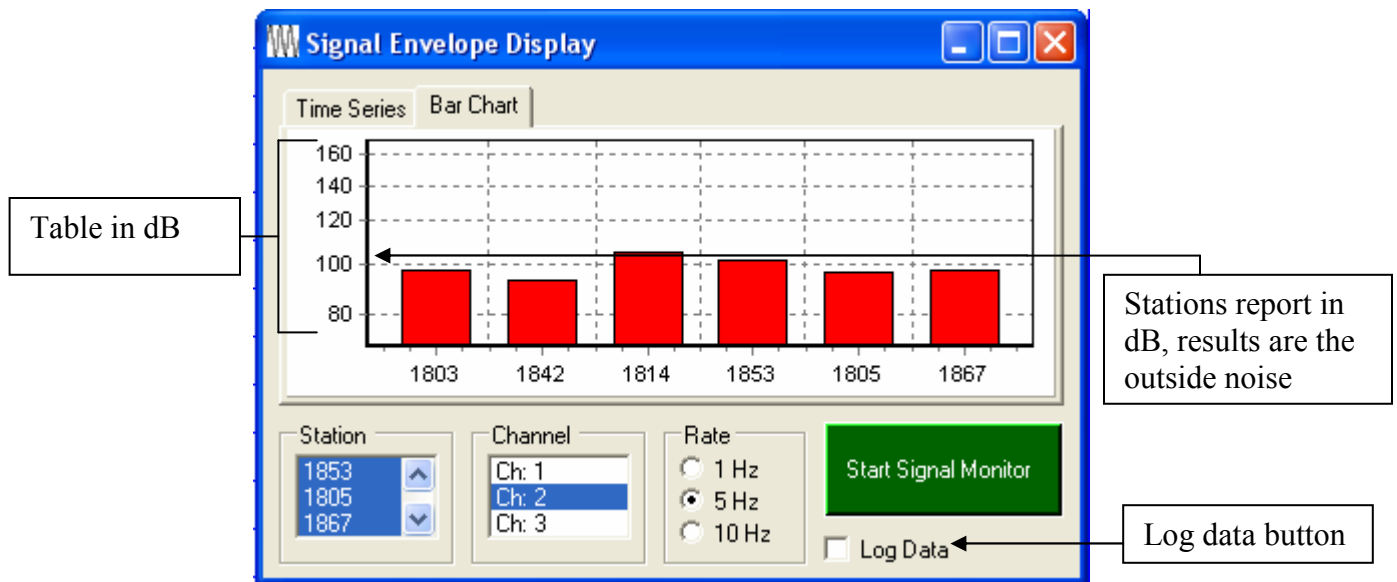


Figure 10a: Step 1—Noise Test

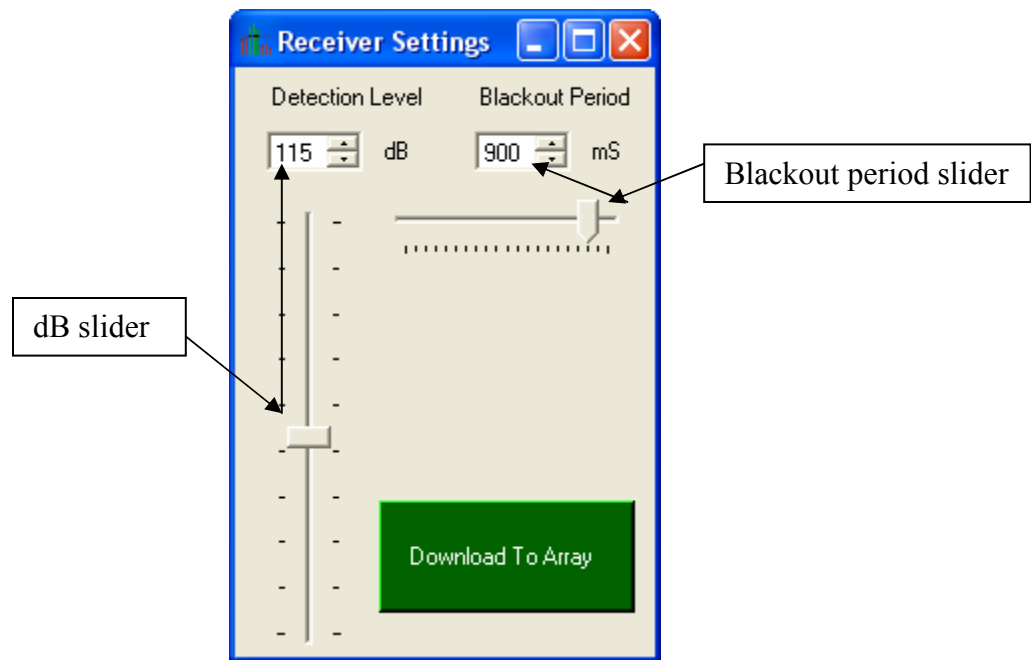


Figure 10b: Step 2—Threshold Level

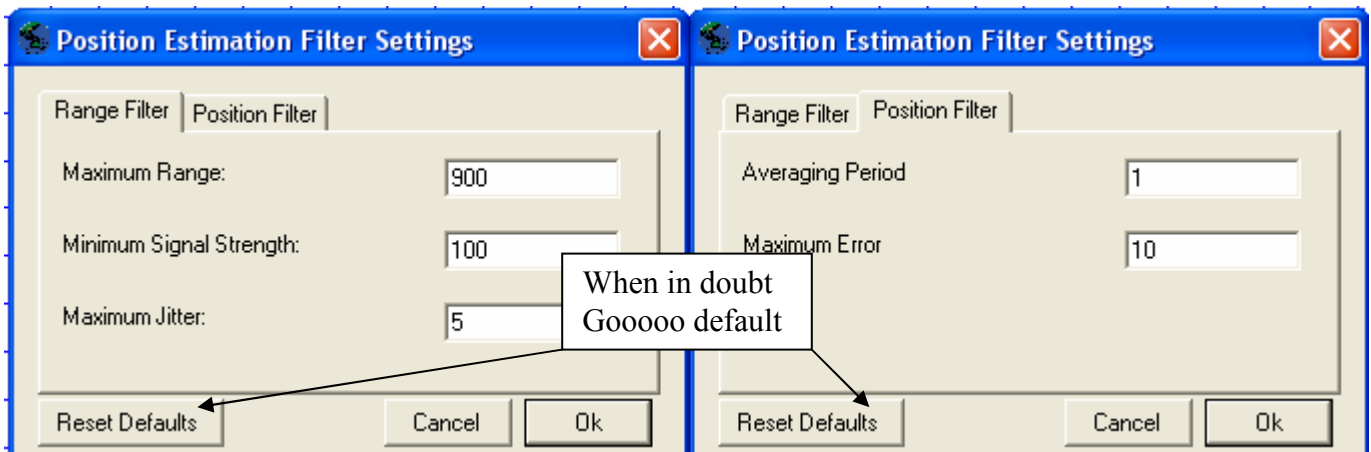


Figure 10c: Step 3—Position Estimation Filter Settings

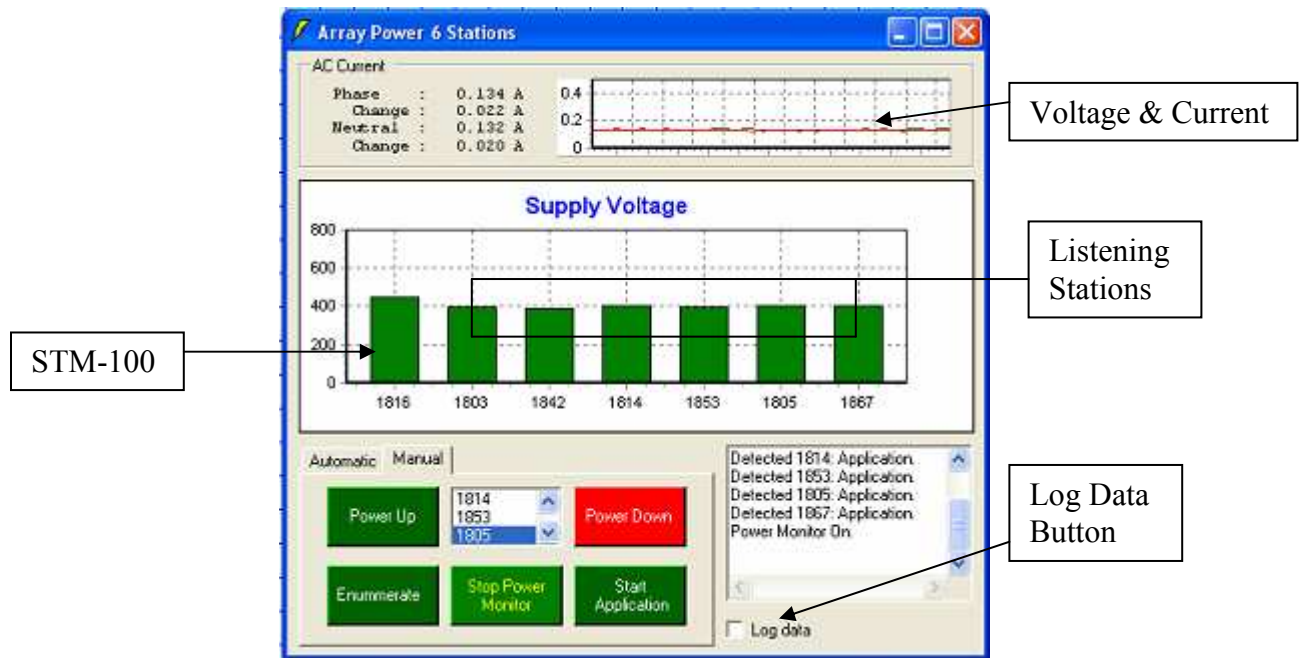


Figure 10d: Step 5—Power Control window with Log data button

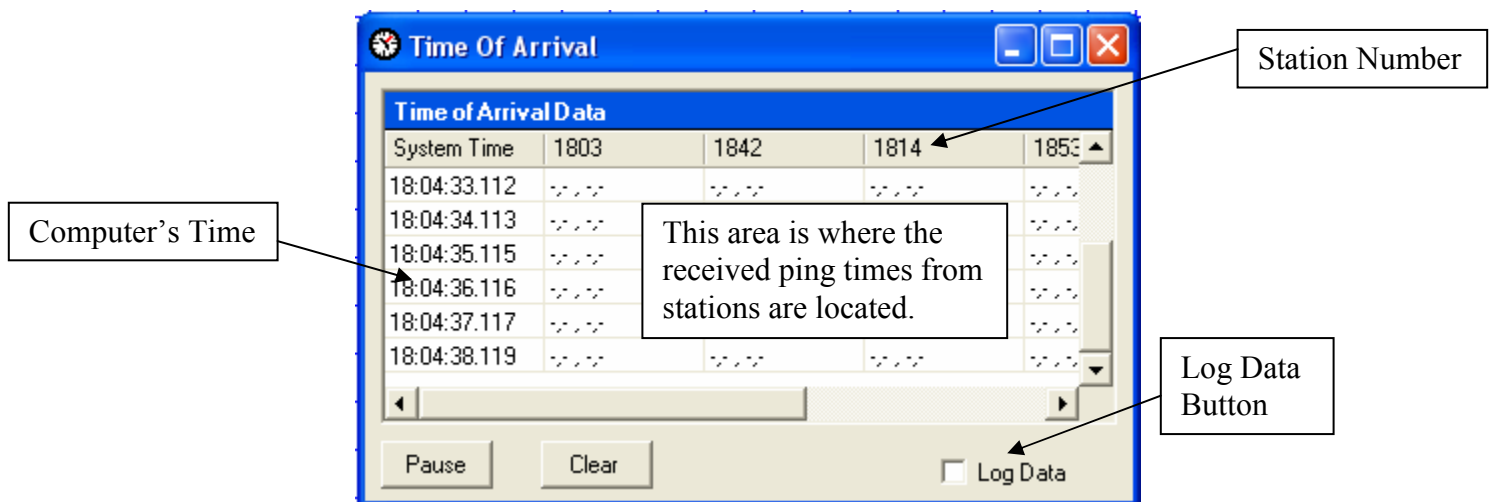


Figure 10e: Step 5 —Time Of Arrival window with Log data button

Screen Shot Of Tracking A Pinger

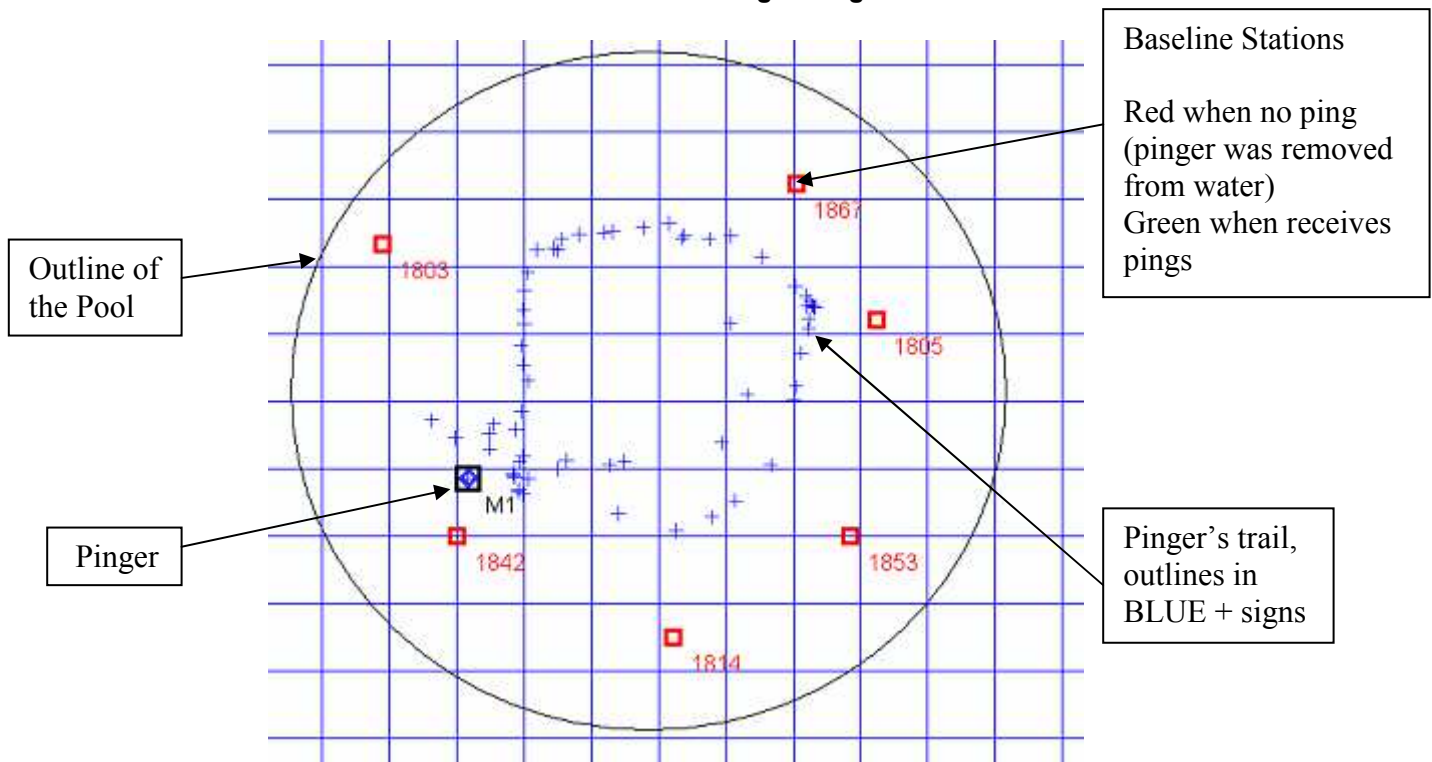


Figure 11: Tracking a pinger in a pool

In this exercise the transducers were the only component in the water (other than pinger). I used a TLP-102 and walked it around in a circle from inside the pool leaving it in the middle as I walked. Over the course of a minute I made a complete circle and turned the pinger off. If you were watching this in real-time then you would see the Baseline Stations glowing green as they received the pings.

8. Replaying Tracking Records and the RangeNav™ Data Files

Tracking records can be replayed in **Replay Mode**. Tracking data is also available in text files. These files can be imported into other software for further analysis of your tracking data.

To play back a track record, simply go to File→Replay Track Record and then find the corresponding track that you want to replay (figure 12). This will then bring up some controls (see figure 13). All tracking data is recorded in raw format, i.e. signal arrival times, signal strength etc. Prior to playing the record, you must define your filter settings in **Mobile -> Position Estimation Filter**. Then, select **File→Reprocess Data**.

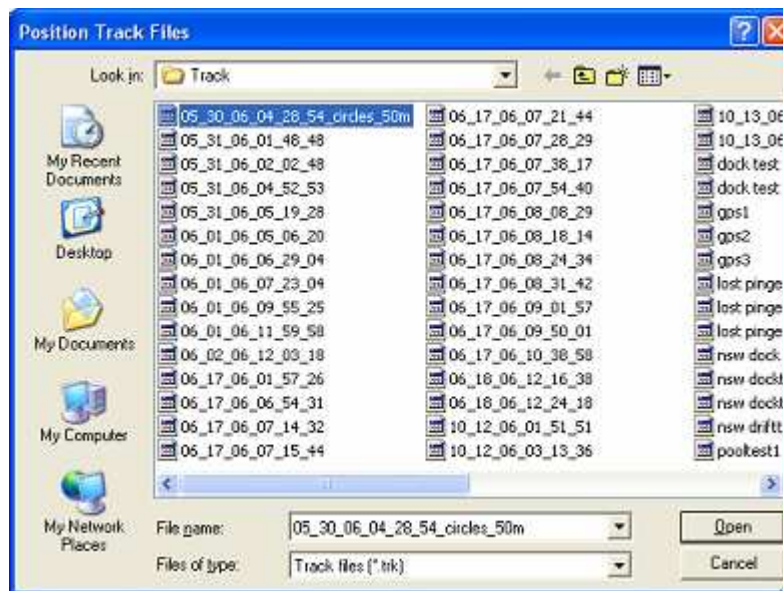


Figure 12: Selecting A Track To Replay

From here you can play the current track as well as pause it, stop it, fast forward or rewind it, and skip to any point in the track. Refer to the controls listed in figure 13.

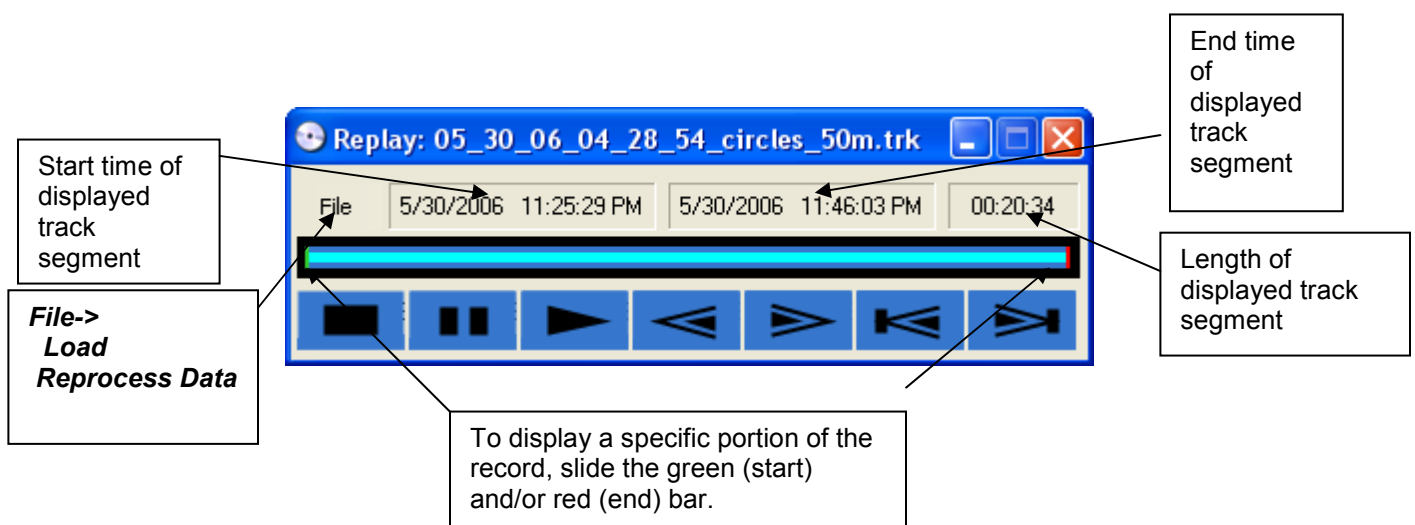




Figure 13: Controls During Track Replay

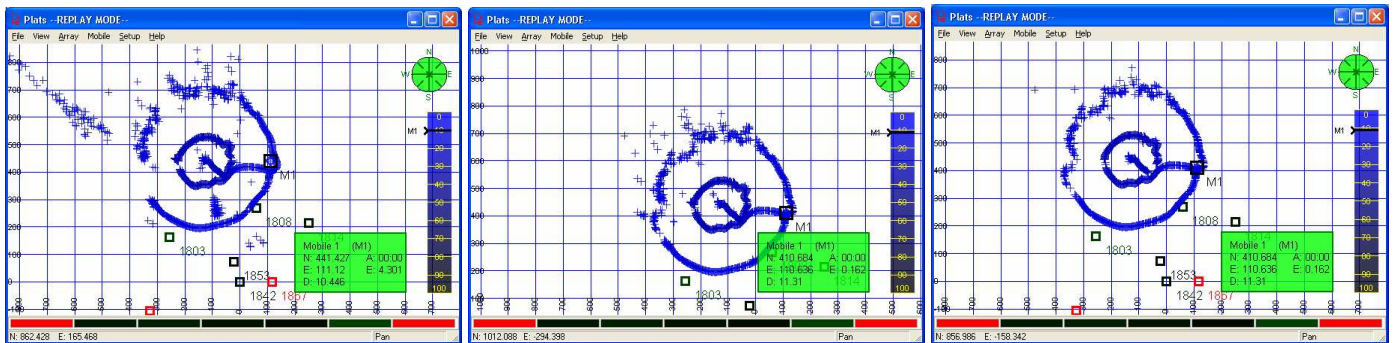


Figure 14: A recording played with no (left), limited (center) and strong (right) filter settings

RangeNav™ stores the full tracking record in a text file with a **.trk** extension. In addition, select data such as times of arrival can also be stored in log files, which are text files with a **.log** extension. These files are available for analysis of your tracking data using your own software tools. Figure 15 shows a portion of a **.trk** file as it appears in Notepad. Refer to the RangeNav™ software manual for a full description of these files.

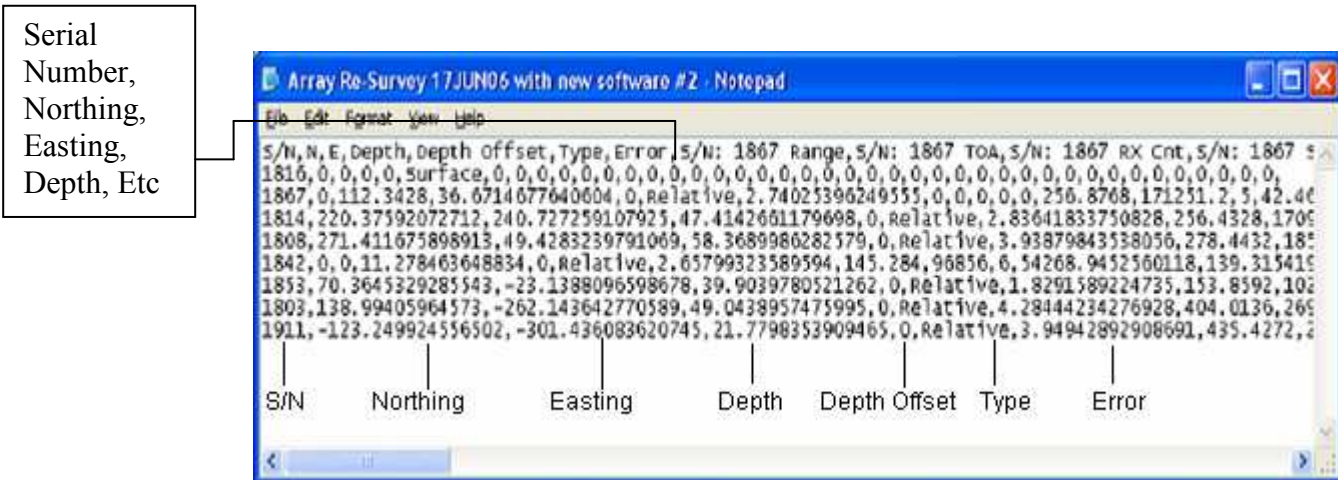


Figure 15: How To Read Array Survey Data

9. Recording Raw Acoustic Data with the RBS-101 Stations

The RBS-101 station can act as an acoustic data recorder. The recording station can record raw acoustic data from the hydrophone while at the same time providing it's normal tracking functions. Acoustic data is stored on an internal CF memory card using the full resolution of the ADC (16-bits) and at the system sample rate, currently fixed at 250 kHz.

A new data file is created each time the user selects to start recording. The start time of the recording is logged in the data file header. The data can be retrieved from one or more stations at a time. Data retrieval has minimal impact upon tracking operations other than consuming communication bandwidth.



RBS-101 Recording Stations

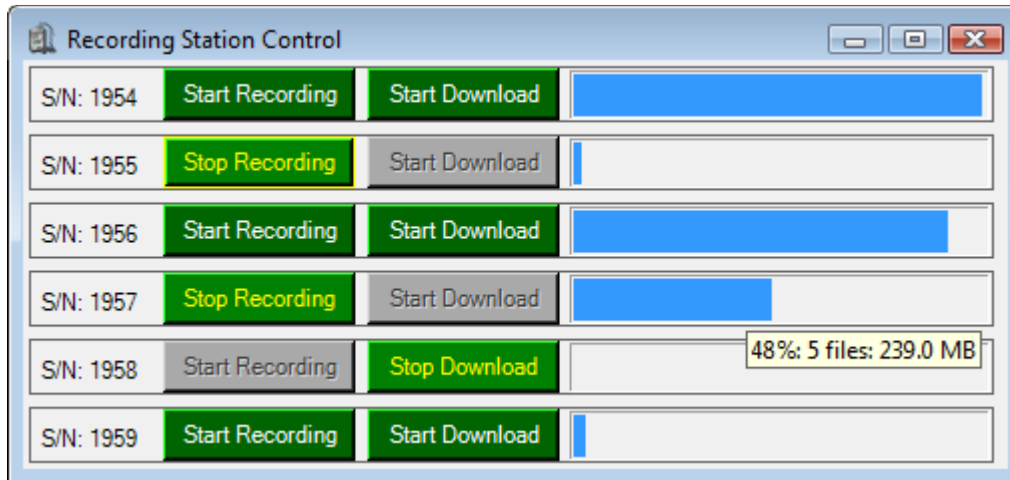
The model RBS-101 recording station are identical to the RBS-100 listening stations, except that a CF FLASH memory card is integrated and raw acoustic data recording firmware is provided. Due to its copper/RS-485 data interface, umbilical communication bandwidth is limited and not suitable for continuous raw acoustic data transmission by all stations in a chain. (Doing so is not normally necessary, because each station processes the acoustic data and needs to send only short ping descriptor packages).

Yet, the RBS-101 station helps when there is a need to obtain occasional samples of raw acoustic data, such as to evaluate background noise or measure the noise signature of a target. The surface station can instruct any listening station to record

the raw data. The data is stored in the FLASH memory, and can be retrieved by the surface station on a bandwidth available basis. FLASH card capacity is 1 GB standard 8 GB optional. The 1 GB standard capacity is sufficient for approx. 30 minutes of raw data recording at the standard sample rate of 250 kHz.

9.1. Operation via the RangeNav™ Surface Station Software

The recording station control window is accessible from the main menu under **Array->Recording Station Control**. Selecting this menu item will bring up the **Recording Station Control** (see Figure 16). The **Recording Station Control** will only pop-up if one or more recording equipped stations have been detected in the array.



The **Recording Station Control** consists of a collection of controls, one per line, for each recording station in the chain.

Each station has four elements: The Station Label, the recording control button, the download control button, and the progress bar.

Each control will also pop-up a 'tool tip' when the mouse hovers of the control.

Figure 16: Recording Station Control

The progress bar tool tip displays disk usage and download-progress. Figure 2 illustrates an array containing 6 recording stations.

Stations 1955 and 1957 are currently recording data, while data download on station 1958 has just started. The tool tip displayed shows that Station 1957 currently has 5 files stored for a total of 239 MB and is 48% full.

Note: A station can not record and upload recorded data at the same time.

Recording operations should not effect normal tracking operations.

Controlling Recording

To initiate recording on a station, press the start recording button. The recording control button will change its text color and action text to indicate that the station is recording. The download control button will become disabled. The progress bar will increment as data is stored. The actual amount of stored data is displayed by hovering the mouse cursor over the progress bar. The progress bar indicates total storage usage and will be completely filled in when the storage device is full.

Recording will be terminated when the recording control button is pressed again. This will also re-enable the download control button.

Multiple stations can be recording at the same time. Multiple stations can be recording while other stations are uploading their recorded data.

Retrieving Recorded Data

To initiate data retrieval on a station, press the start download control button. The download control button will change its text color and action text to indicate that the station is sending its data. The progress bar will change from indicating the total amount of stored data to the total amount of downloaded data. The progress bar will increment as data is retrieved. The actual amount of retrieved data is displayed by 'hovering' the mouse cursor over the progress bar. The progress bar indicates total retrieved data size and will be completely filled in when all the recorded data has been downloaded. An estimate of time remaining (based upon download speed) is also displayed in the progress bar tool tip when downloading.

Note: Currently all data must be downloaded at the same time. Stopping then restarting a download will cause the entire download sequence to begin again. A station can not record and upload recorded data at the same time.

Erasing Recorded Data

Stored data erasure is done in a single format operation. This action is performed by right clicking on the Station ID label. A confirmation window will pop-up to insure that you really intend to format the storage device. Upon affirmative confirmation **ALL** data on the storage device will be erased.

The current file number (see below) is reset to 1 each time the storage device is formatted.

Note: A station can not record or upload recorded data at the same time as erasing the stored data.

9.2. Advice for the Download and Use of Raw Acoustic Data

Acoustic data recording creates very large binary files. Currently, all data recording is at a fixed sample rate of 250,000 samples per second with a resolution of 16-bits per sample. This translates to a raw data record size of about 500 Kbytes per second. Consideration must be paid to data download and use.

Acoustic Data Download Speed

RangeNav™ system communication is full-duplex with a speed of 115,200 bits/sec. This translates to a 'physical layer' speed of about 11.5 Kbyte/sec. As in any system, some bandwidth is used up by overhead. A conservative assumption is that 50% of bandwidth or about 6 Kbyte/sec is available for the data payload. Since the data acquisition rate is fixed at around 500 Kbyte/sec, each second of recorded acoustic data will take about 500 Kbyte / 6 Kbyte/sec = 83 seconds to download. Be aware of this 83:1 ratio when deciding for how long to record data.

Use of the Recorded Data

The acoustic data files are binary files, following the format described in section 3 below. Such files cannot be directly imported into Excel or similar software expecting text files, and in any case they would be too large. For example, Excel limits each column of data to 65536 values, which would cover only 0.26 seconds of recording.

Instead, we recommend processing and analyzing the data with Mathematica, Matlab, or other software that can accept raw binary data files or with custom designed software.

9.3. Data File names and Format

Data Filenames

The downloaded data is stored in separate files. There will be one file for each time a recording is started.

The files are located in the **..\Records\RawAcousticData** directory.

Each file is automatically given a name of the form:

SN_F__MM_DD_YY_HH_MM_SS.adf

Where:

SN	= Station Serial Number.
F	= Current File number (i.e 1=first file on the storage device)
MM	= 2-digit month number (01 = January)
DD	= 2-digit day of the month
YY	= 2-digit year
HH	= 2-digit Hour (0-24)
MM	= 2-digit Minute
SS	= 2-digit Second

The Time/Date Stamp fields are UTC.

The extension ".adf" stands for acoustic data file.

Data File Format

Each stored data file is a binary file containing a 512 byte header followed by the raw data samples. Each data sample occupies 2 bytes (16 bits). All multi-byte data types are stored in little endian order (the same as the native format of an Intel PC or TI DSP.)

Data File Header

The data file header is made of the following fields:

uint_32bit	magic
uint_32bit	version
uint_8bit[8]	timestamp
uint_32bit	fileCount
uint_32bit	startPosition
uint_32bit	fileSize
uint_32bit	errorCount

Where:

uint_32bit indicates a 4 byte unsigned integer.

uchar_8bit[8] indicates a array of 8 1 byte unsigned integers.

And

magic = File start header identifier (0xaa5555aa)

version = File version number

timestamp = 64-bit MS Windows timestamp in UTC

fileCount = Current File number (i.e 1=first file on the storage device)

startPosition = Position of the start of this file on the storage device in units of device sectors

fileSize = Size of the data file in bytes, including 512 bytes for the header

errorCount = Count of errors detected during recording.

An error can occur if a CF write delay causes data to be lost. While the storage buffers on the listening stations have been sized to work with 0 errors for tested cf cards, there is still some possibility of data loss due to the non-deterministic nature of the internal CF card controller.

10. Tracking Multiple Targets

General Overview

The system operation for tracking multiple targets is very similar to the single target tracking described throughout this manual. Here are the key differences:

1. Each target has its own pinger, and each pinger must be set to a different acoustic channel.
2. In the acoustic channel editor (Setup->Acoustic Channel Definitions), you must select acoustic filters for each pinger. Two filter selections are required per pinger because each pinger emits pings on two frequencies.
3. There will be one target information box for each target at the bottom of the tracking screen. The boxes are labeled Mobile-1, Mobile-2, Mobile-3... The target names correspond to the sequence of filters selected in the acoustic channel editor.
4. Each target has its own track point and paints its own trace. The target symbols are M1, M2, M3...
5. You can center the display on any tracked target by clicking on its information box.

Step 1: Selecting Acoustic Bands and Channels for Multi-Target Tracking

In order to minimize interference between the multiple target pingers, minimize the impact of background (ambient) noise and stay within the processing capabilities of the listening stations, the pingers (LF, MF or HF band type), acoustic channels and detection filters must be selected with care.

The selection process is guided by this trade-off:

- Using **detection filters** with more coefficients is desirable, because these filters are sharper and thus filter out more of the background noise. The sharper filters also allow the use of tighter spaced channel within one band. However, these filters also require more processing power, and thus limit the number of targets that can be tracked. Therefore, the highest number of coefficients that is still within the processing capability of the listening stations should be used. That limit is currently a total of 2400 coefficients among all filters used, except for the system self survey filter. In practice, that means use a 398 coefficient filter when tracking 1-3 targets, 192 coefficient filters for tracking 4-6 targets, and 126 coefficient filters for tracking 6-9 targets. The maximum theoretical number of targets supported by RangeNav™ is ten.
- **Pinger band selection** (LF, MF and HF) should be such that pingers are spread across the available bands and there is a minimum number of pingers in each band. This in turn allows the greatest channel spacing within each band.
- **Pinger channel selection** should be such that maximum frequency spacing is maintained. If possible, don't use adjacent channels such as channel 1 and 2. Use channel 1 and 3 instead.

The following table shows the recommended filter, pinger and channel selection for tracking 1-6 targets.

Pingers	# Coefficients	Band & Channel Selections for Pingers
1	398	#1: MF CH1
2	398	#1: MF CH1 #2: HF CH1
3	398	#1: MF CH1 #2: MF CH4 #3: HF CH1
4	192	#1: MF CH1 #2: MF CH4 #3: HF CH1 #4: HF CH4
5	192	#1: MF CH1 #2: MF CH4 #3: HF CH1 #4: HF CH4 #5: LF CH1
6	192	#1: MF CH1 #2: MF CH4 #3: HF CH1 #4: HF CH4 #5: LF CH1 #6: LF CH4

Notes:

- Use TLP-100 pinger for LF band
- Use TLP-101 pinger for MF band
- Use TLP-102 or TLP-103 pinger for HF band

Figure 17: Recommended Band & Channel Selections for Multi-Target Tracking

For tracking more than six targets or to meet other project requirements such as use of certain frequency bands or pingers only, please contact Desert Star Systems. We will custom-design the filters to meet the project requirements. (Experienced users can design their own filters using ScopeFIR or similar software).

While a set of standard filters are found in the **Filters** sub-folder of the installed surface station software, Desert Star system also publishes new filters on occasion. You can find the latest files on-line here:

<http://www.desertstar.com/FAQ/questions/113/RangeNav+Acoustic+Channel+Filter+Files>

Step 2: Configuring the Pingers and Defining the Acoustic Channels

Select a set of pingers. Each pinger must be programmed to the correct channel. That is done by serial programming for the TLP-100, TLP-101 and TLP-102 models, and by magnetic switch for the TLP-103. Refer to the pinger Technical Reference Manuals for the programming procedure.

In the surface station software, select the acoustic channels as follows.

Open **Setup → Acoustic Channel Definitions** in the PLATS software screen.

When you are in the **Channel Editor** your first channel should be labeled as **Ch:1 survey_125000_###.fir**. This is the array self-survey channel. The ### stands for the number of coefficients, and must match the coefficient count used in the pinger detection filters, i.e. 398, 192 or 126. After your survey channel is defined click the **Add** button to start defining Pinger 1.

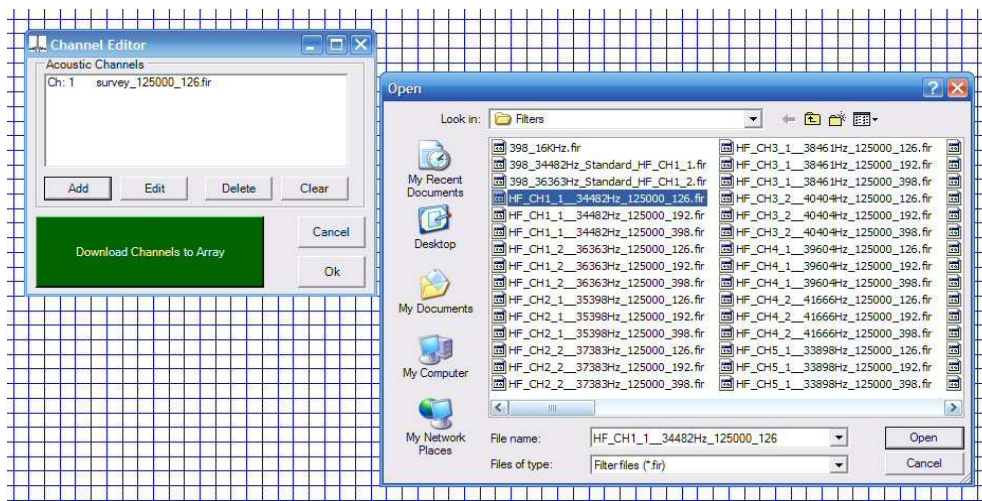


Figure 18: Filter drop-down menu

For example, if you are tracking two targets and are following the table, then the first pinger will be an MF type (TLP-101) operating on Channel 1 in the MF band, and the second pinger will be an HF type (TLP-102 or TLP-103) operating on Channel 1 of the HF band. For the first pinger, use files **MF_CH1_1_16528Hz_125000_398.fir** and **MF_CH1_2_18518Hz_125000_398.fir**. For the second pinger, use files **HF_CH1_1_34482Hz_125000_398.fir** and **HF_CH1_2_36363Hz_125000_398.fir**. A channel editor screen dump for this scenario is shown below.

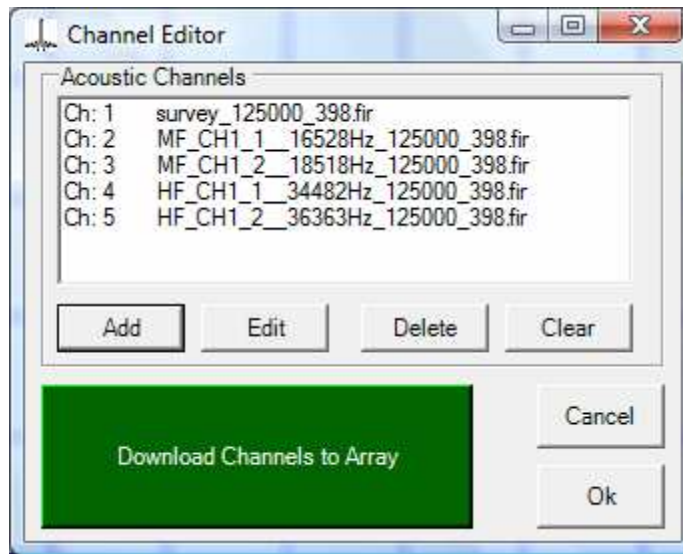


Figure 19: Acoustic Channels for two Pingers following the recommended standard selections

Step 3: Tracking Operations

Tracking can now be started in the same way as for a single target. There will be one target information box for each target, and each target will have its own track point and trace. You can center the display on any target at any time by clicking on its information box.

11. System Maintenance

Most of the components of RangeNav do not require much maintenance. Refer to specific technical reference manuals for maintenance on each component. Here are the overall system maintenance guidelines:

- Rinse your equipment off when finished (listening stations and pingers). Pay in particular attention to metal components such as the connectors and depth sensor.
- Prevent excessive water falling onto the STM-100 surface junction box. It is only splash proof. Clean the STM-100 with a dry or moist towel.
- Check all cables prior to deployment and upon recovery. Do not use any damaged cable to avoid compromising the entire system.
- Apply a thin film of silicone grease to the rubber molded underwater connectors before mating.
- Thread the locking sleeves of all connectors until they come to a full stop against the bulkhead connector. This is essential to ensure reliable connections. Inspect before use!
- Properly attach the cable strain relief system before use. Inspect your work, paying attention that the shackles are secured in the locked position.
- Do not exceed the 500lb working load of the cable.
- Do not violate the 6" minimum bending radius of the cable.
- Inspect the cable upon recovery and set aside any damaged or questionable sections for repair or test.
- Check back periodically on www.desertstar.com for firmware updates and new Knowledge Base entries.
- Most importantly, enjoy your underwater tracking work and thanks for using RangeNav™!